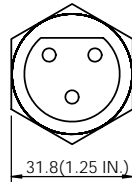
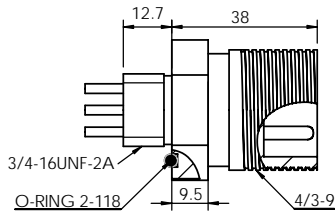
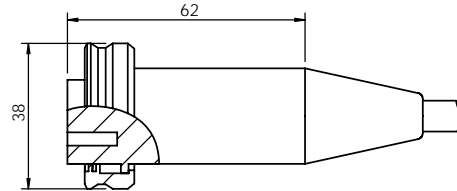




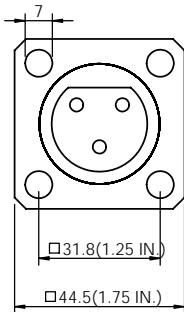
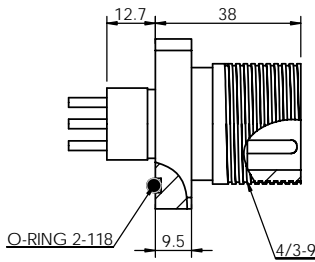
BCR-5507-2003



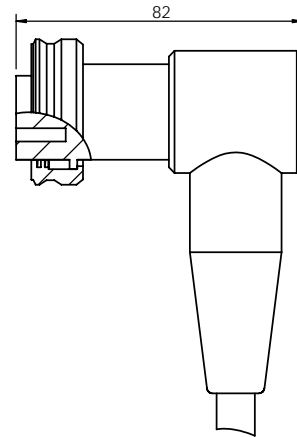
CCP-5501



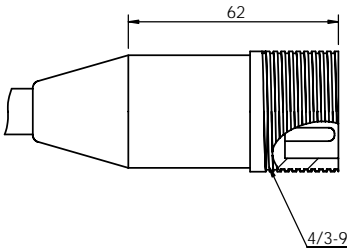
FCR-5506-2003



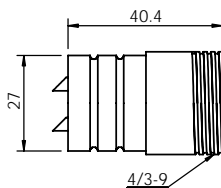
CCP-RA-55R1-2003



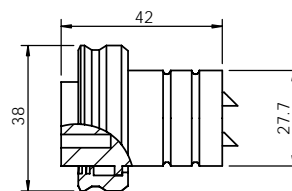
CCR-5502



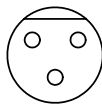
CCR-AT-55A2



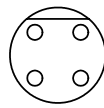
CCP-AT-55A1



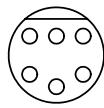
PIN LAYOUT



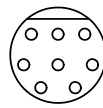
AWG 14
2003



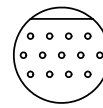
AWG 14
2004



AWG 14
2006



AWG 16
2008



AWG 18
2013



Metal Shell 5500 Series Shell Size 20 3-13 pins

Operation Specifications

Max Current –	2003	18A (14 AWG)
	2004	18A (14 AWG)
	2006	15A (14 AWG)
	2008	13A (16 AWG)
	2013	12A (18 AWG)
Max Voltage		600V
Insulation		>250megaohm
Contacts		<0.01 ohm
Matings		>750
Temperature		-5C - +65C
Depth		>600 bar (10K PSI)

Material Specifications

Molding		Low Carbon Neoprene
Bulkhead		316 Stainless, Titanium
Contacts		Gold plated per MIL-G 45204 Type II, Grade D, Class 00
Pin		Brass
Sockets		Beryllium Copper
O-ring		2-118 Nitrile
Locking Sleeve Material		316 Stainless, Titanium
In-line cable	AWG 18	60cm, (0.82mm ²) 16/30 stranding
	AWG 16	60cm (1.32mm ²) 26/30 stranding
	AWG 14	60cm (2.08mm ²) 41/30 stranding
BH leads	AWG 18	30cm, Teflon, 19/30
	AWG 16	30cm, Teflon 19/29
	AWG 14	30cm, Teflon 12/27

Cable Diameter

Color Code

3 cond	OD 14.2mm (0.56")	1-Black, 2-White, 3-Green
4 cond	OD 15.2mm (0.60")	1-Black, 2-White, 3-Red, 4-Green
6 cond	OD 18.3mm (0.72")	1-Black, 2-White, 3-Red, 4-Green, 5-Orange, 6-Blue
8 cond	OD 15.1mm (0.60")	7- White/Black, 8-Red/Black
13 cond	OD 18.2mm (0.72")	9-Green/Black, 10-Orange/Black, 11-Blue/Black, 12-Black/White, 13-Red/White